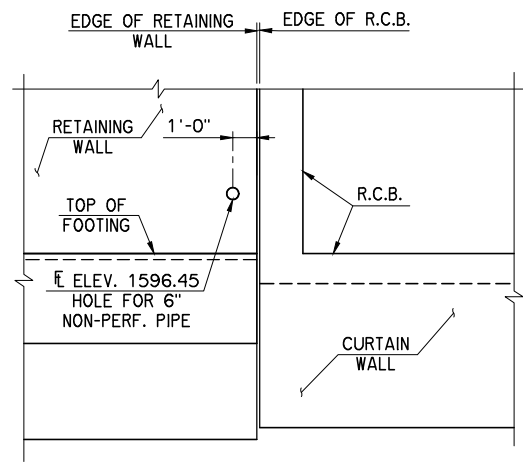
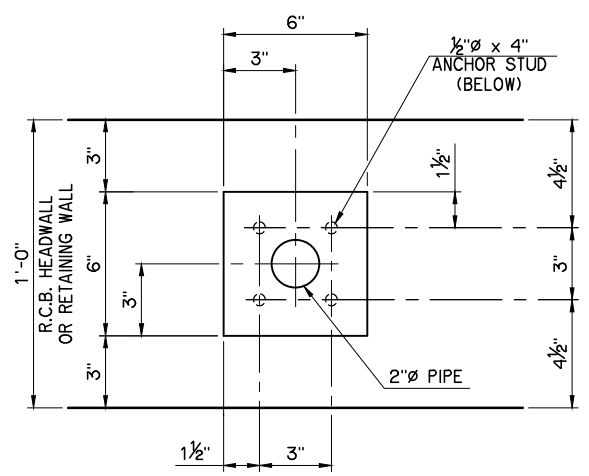


REVISIONS		
REV. NO.	DESCRIPTION	DATE

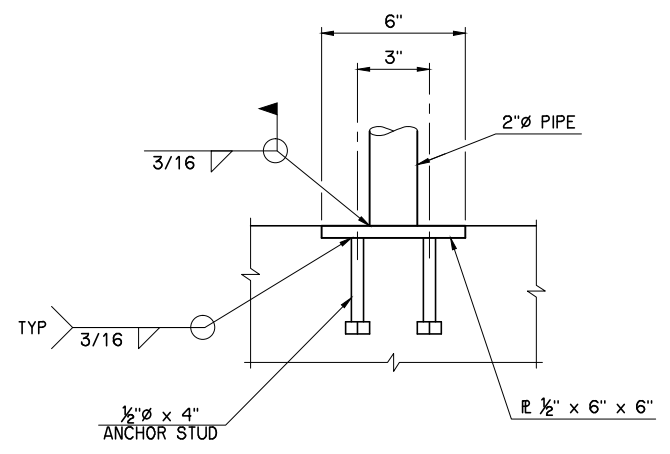
NOTE:  
ADJUST WALL REINFORCEMENT SPACING  
TO FIT 6"Ø PIPE UNDERDRAIN.



**PIPE UNDERDRAIN LOCATION DETAIL**  
(PANEL 1B SHOWN, PANEL 3 A OPPOSITE HAND)



**PLAN AT HANDRAIL BASE PLATE**



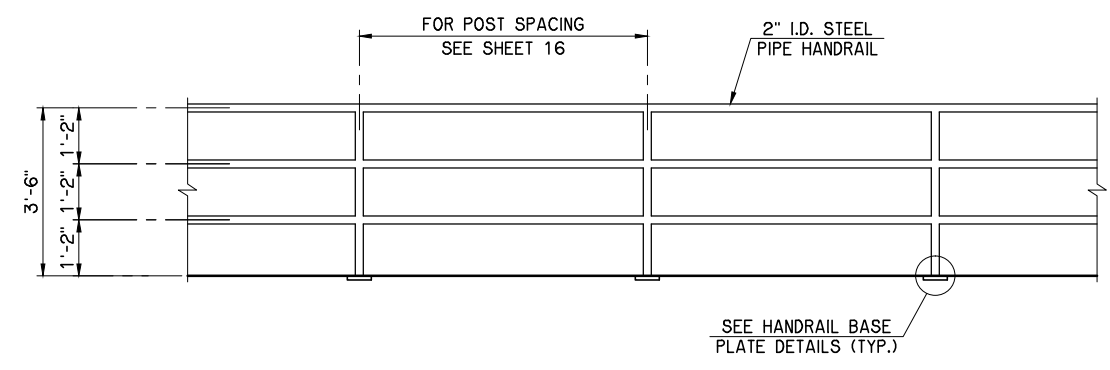
**SECTION AT HANDRAIL BASE PLATE**

NOTES:  
AFTER FIELD FABRICATION, THE 2" DIAMETER STEEL PIPE RAIL SHALL  
BE CLEANED AND PAINTED IN ACCORDANCE WITH SECTIONS 512 AND  
730 OF THE STANDARD SPECIFICATIONS.

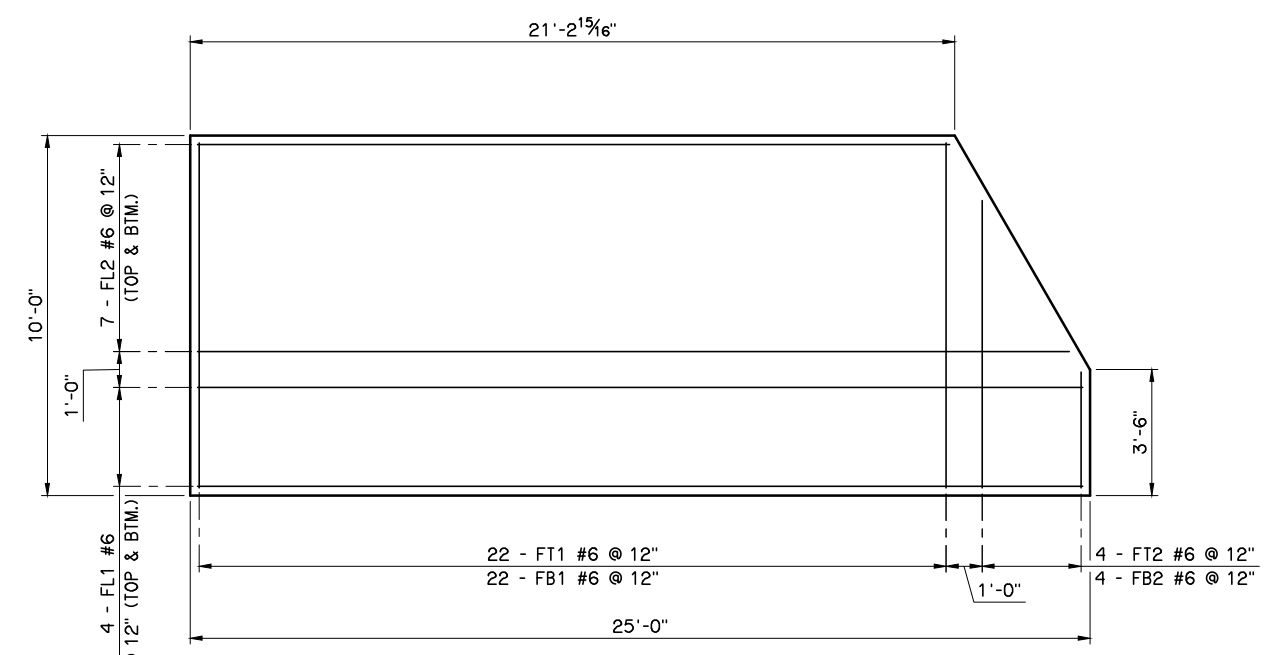
THE PIPE RAIL SHALL BE CLEANED OF ALL MILL SCALE, DIRT, AND  
OTHER FOREIGN MATERIAL IN ACCORDANCE WITH SSPC-SP 10,  
NEAR-WHITE BLAST CLEANING USING AN APPROVED ABRASIVE  
MATERIAL TO PRODUCE A DENSE UNIFORM ANCHOR PATTERN IN  
ACCORDANCE WITH SECTION 512.04(B) OF THE STANDARD  
SPECIFICATIONS.

WELDED CONNECTIONS MAY BE USED FOR THE PIPE RAIL. ALL  
WELDED CONNECTIONS SHALL BE THOROUGHLY CLEANED OF ALL  
LOOSE SCALE, AND GROUND SMOOTH. SHOP DETAILS FOR ALL PIPE  
RAIL SHALL BE SUBMITTED TO THE ENGINEER FOR APPROVAL.

ALL COST TO COMPLETE THE WORK AS SPECIFIED INCLUDING LABOR,  
MATERIALS, TOOLS, WELDING, CLEANING, PAINTING AND INCIDENTALS  
SHALL BE INCLUDED IN THE ROADWAY UNIT PRICE BID PER LINEAR  
FOOT FOR "HANDRAILING".



**ELEVATION OF HANDRAIL**



**PLAN OF RETAINING WALL B, PANEL NO. 1 FOOTING**  
(WALL NOT SHOWN FOR CLARITY)

S.H. 44 OVER DRY ELK CREEK	WASHITA COUNTY	Design	AFW
<b>RETAINING WALL DETAILS</b> SHEET 3 OF 3		Detail	DRB
		Check	AFW
<b>STATE OF OKLAHOMA</b>		WHITE ENGINEERING ASSOCIATES	
DEPARTMENT OF TRANSPORTATION		JOB PIECE NO. 28774(04)	
		SHEET NO. 20	

I:\Active\1220\DWG\Handrail.dwg, 2/22/2016 1:41:37 PM, Deanne